

ACCU-660 Bedknife Grinder



*The Fast And Easy Choice
For Productivity, Flexibility, Quality, and More!*



ACCU-660 Bedknife Grinder

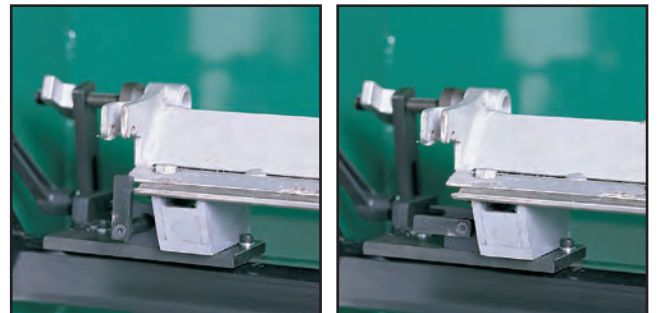
Foley United, the world leader in reel grinding equipment, introduces the Accu-660 Bedknife Grinder — yet another innovative solution for grinding bedknives. A unique and proven bedknife mounting system provides a fast angle set-up and easy alignment method to quickly and accurately grind all bedknives.

The mounting system utilizes industrial-style permanent magnets in conjunction with center supports to provide rigid support to the bedknife while grinding. This stress-free set-up ultimately increases the accuracy and rigidity beyond current standards for manual bedknife grinders. You can grind all bed bar arrangements without additional tooling.

Changing from grinding the front and top surfaces of the bedknife takes only seconds as the operator easily rotates a lever. A permanently-mounted and easy to read protractor system provides fast angle setup and repeatability of the desired angles spelled out by the Original Equipment Manufacturers specifications.

Designed for maximum operator protection, the Accu-660 has a clear plastic enclosure cover that retains coolant mist and shields the operator. Its interlock feature prevents operation without the cover being totally closed. Dual adjusting handles on the outside of the grinder allow for quick alignment set-up while keeping the operator away from the grinding contact area.

The rigid construction provides years of service without any deviation in the grind. The complete weldment design of the machine is compact, yet guarantees that the tolerances built into the machine will be retained for the life of the grinder.



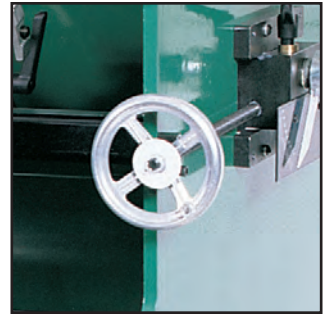
Alignment Gauges allow for the easy placement of the bedknife on magnetic set-up planes. After placement, the gauges are stored in an out-of-the-way position.



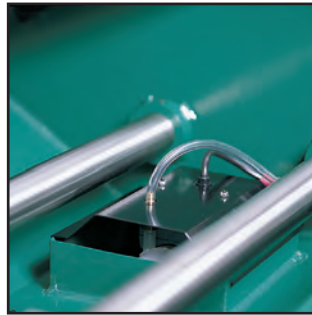
Bedbar Mounting System combines magnetic set-up planes with easy-adjust center supports. This provides a solid surface and holding of the bedbar during the set-up and grinding processes.



Fast Set-Up in determining front face and top face angles for the bedknife. Match the manufacturer's specifications by rotating the lever between the front and top face angles.



Adjusting Handles on both sides of the machine enable movement of the bedbar mounting system for alignment.



Flood Coolant System is integral to the machine. A self-contained water pump system filters and re-circulates the water. Water flow is controlled by the operator and the flexible water tubing allows for easy positioning.



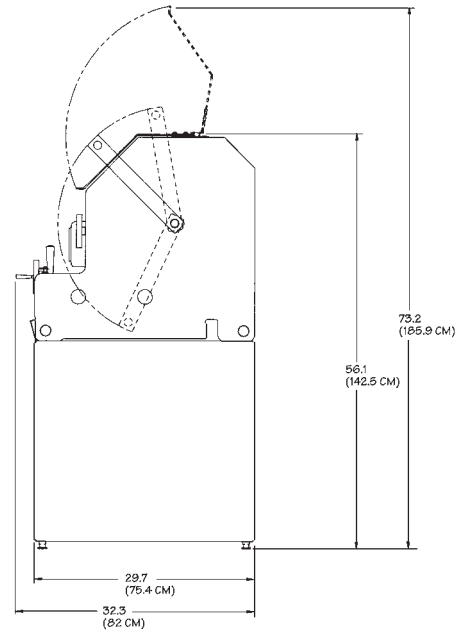
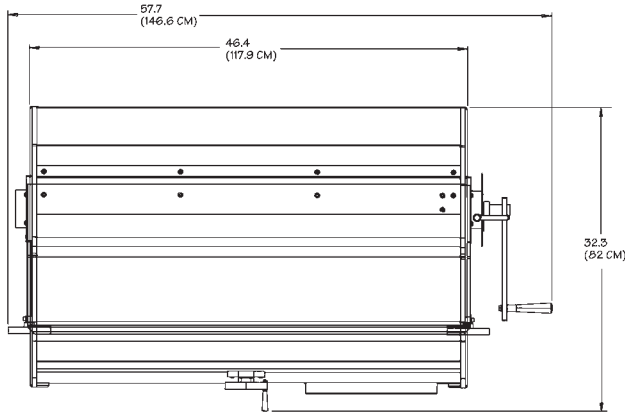
New Innovative Grinding and Traverse System provides a precise foundation for the most accurate grind possible for manual bedknife grinders. This system travels with ease and provides an operator-friendly single point in-feed.



Diamond Wheel Dresser allows the operator to redress the grinding wheel. The permanently attached dresser stores easily out of the way during grinding and requires minimal adjustments for dressing.



ACCU-660 Bedknife Grinder



Specifications Part Number 6600901

- Weight 670 pounds
- Height 56.1"
- Width 57.7"
- Depth 32.3"
- Power 115V, 50/60 Hz, single phase
- Grinding Motor 3/4 HP totally enclosed, fan-cooled

Standard Features

- Easy Placement Alignment Gauging
- Permanently-Mounted Diamond Wheel Dresser
- Self-Contained Flood Coolant System
- Unique Magnetic Bedbar Mounting System
- Easily Accessible Bedbar Adjusting Handles
- Innovative Manual Grinding and Traverse System

Specifications subject to change without notice.



Setting the Standard with the World's Most Valued Grinders.

A Division of Foley-Belsaw
 River Falls, Wisconsin 54022
www.foleyunited.com

Distributed By: